

The logo for IRRARflow, featuring the brand name in a stylized font with a blue-to-orange gradient and a registered trademark symbol. The letters 'I', 'R', 'R', 'A', and 'f' are blue, while 'l', 'o', 'w' are orange. The 'f' and 'l' are connected by a thin line, and the 'o' and 'w' are connected by a thin line. The entire logo is enclosed in a rounded rectangular border with a blue-to-orange gradient.

# IRRARflow<sup>®</sup>

## INTRODUCING AN ACTIVE FLUID EXCHANGE SYSTEM



**Automated Irrigation**

**Controlled Drainage**

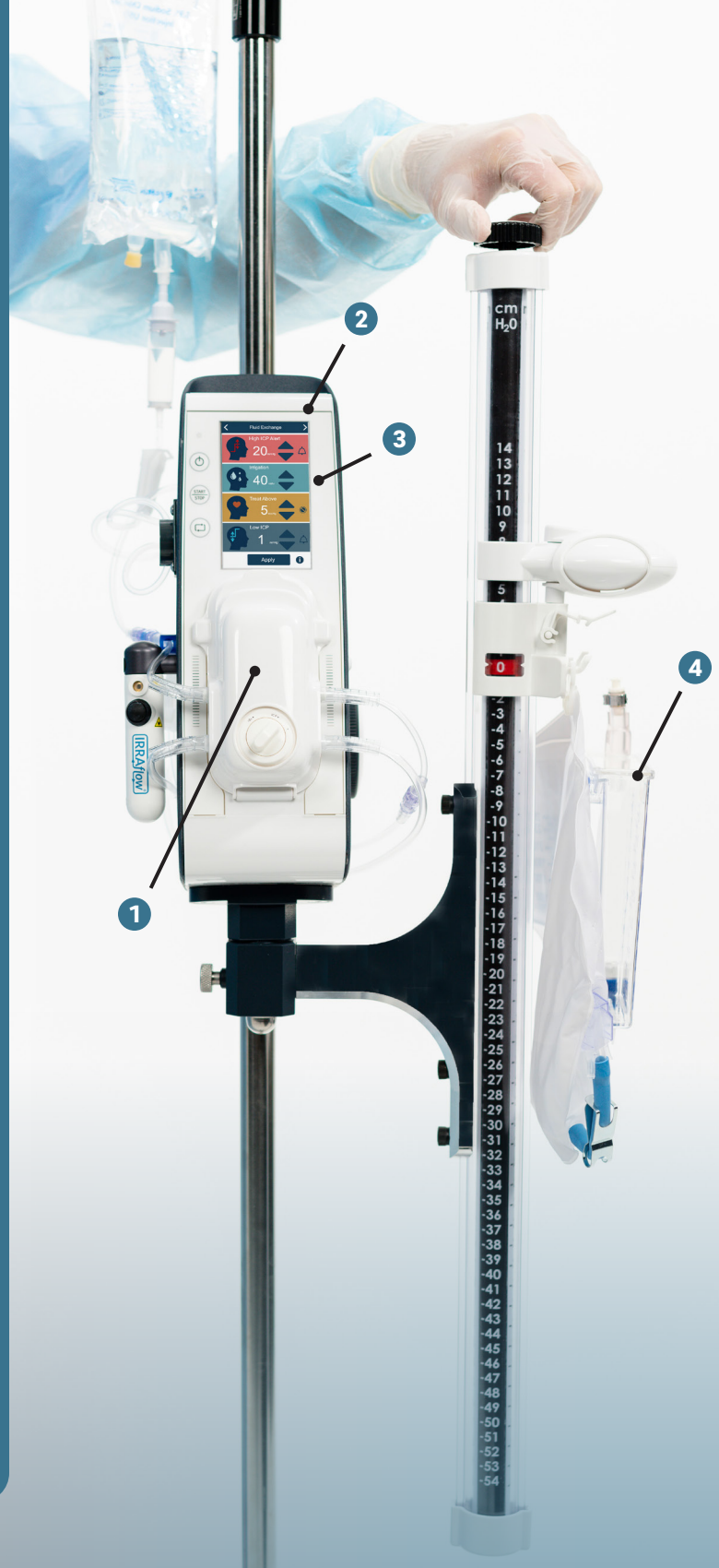
**Continuous ICP Monitoring**

# IRRAflow<sup>®</sup>

## YOUR DYNAMIC SOLUTION FOR ADVANCED FLUID MANAGEMENT.

IRRAflow's innovative technology allows the user to customize patient treatment with a therapeutic approach to treating intracranial bleeding by combining needed drainage, continuous ICP monitoring and automated, controlled irrigation, all in one system.

- 1 Intelligent Digital Cassette enables communication between control unit and catheter to provide automated irrigation, fluid drainage, and ICP monitoring
- 2 Intuitive touchscreen with customizable safety features provides control when managing ICP and CSF drainage
- 3 Step-by-step tutorials for easy setup and treatment workflow
- 4 Easy-to-use Drainage Collection System provides a simple solution for fluid management



Automated Irrigation



Controlled Drainage



ICP Monitoring

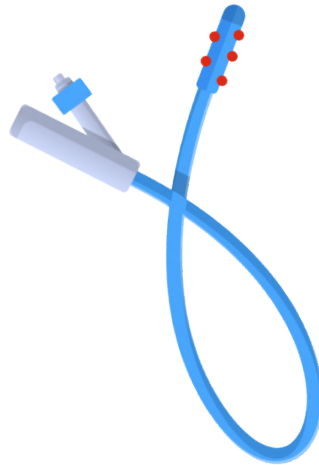
**IRRAflow is the FIRST and ONLY system that offers automated irrigation, controlled drainage, and ICP monitoring, all in one system.**

# SHOULD WE BE SATISFIED WITH HISTORIC SHORTCOMINGS OF LEGACY DRAINAGE TECHNOLOGY?

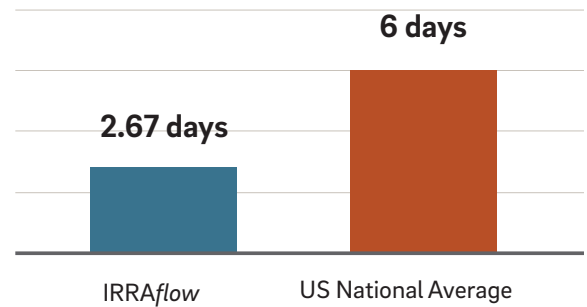
Market-leading EVDs become blocked up to

**47%** of the time<sup>1</sup>,

which can cause an increased risk of infection, and prolonging the length of stay in the ICU.



## Days in Hospital<sup>3</sup>



Cost, increased length of stay after infection  
**(\$84,773 for 10 days)<sup>1</sup>**



Pre-IRRAflow



Post-IRRAflow

## PUBLISHED LITERATURE HIGHLIGHTING CLINICAL ADVANTAGES OF IRRAflow VERSUS TRADITIONAL DRAINAGE

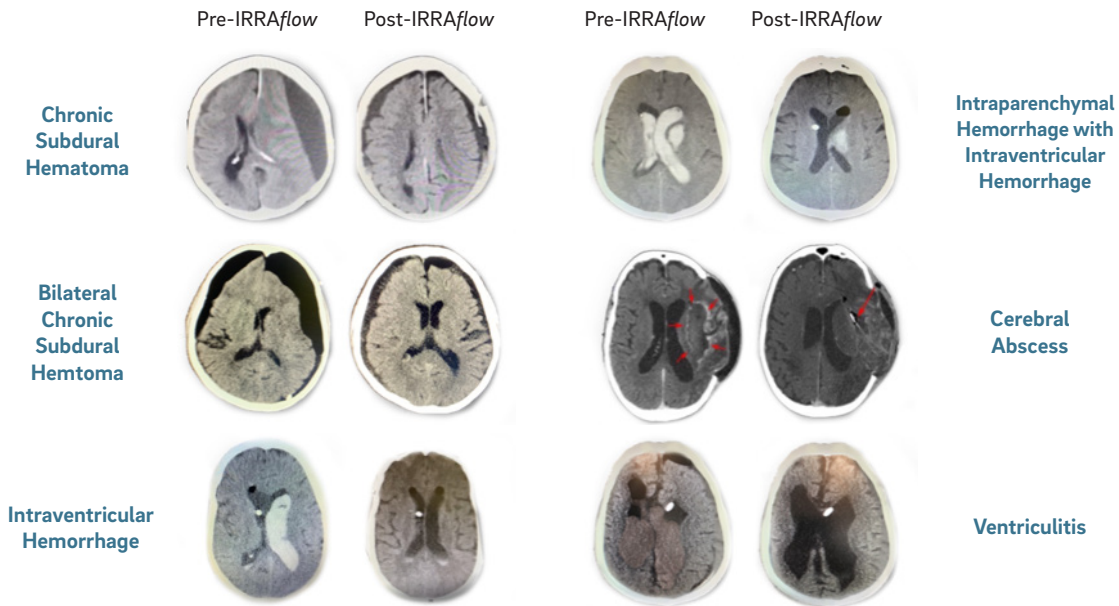


*"Our case demonstrates clear radiographic and clinical superiority of the IRRAflow system compared to standard EVD."*<sup>2</sup>

(1) Fargen KM, Hoh BL, Neal D, O'Connor T, Rivera-Zengotita M, Murad GJ. The burden and risk factors of ventriculostomy occlusion in a high-volume cerebrovascular practice: results of an ongoing prospective database. *Journal of Neurosurgery*. 2015:1-8. (2) Rajjoub K, Hess R M, O'Connor T E, et al. (May 22, 2021) Drainage, Irrigation, and Fibrinolytic Therapy (DRIFT) for Adult Intraventricular Hemorrhage Using IRRAflow® Self-Irrigating Catheter. *Cureus* 13(5): e15167. doi:10.7759/cureus.15167 (3) Davies J, Himstead A S, Kim J, et al. (August 21, 2021) Use of Automated Irrigating Drainage System in Six Patients With Chronic Subdural Hematoma: A Single-Center Experience. *Cureus* 13(8): e17355. doi:10.7759/cureus.17355

# IRRAflow HAS BEEN USED TO TREAT MULTIPLE DISEASE STATES

The IRRAflow system has been used to treat a variety of pathologies; acute and chronic SDH, IVH, IPH with Ventricular involvement, SAH, Ventriculitis, and Cerebral Abscesses.



Product #	Product Name	Product Description
<b>IRRAFLOW DUAL-LUMEN CATHETER</b>		
ICGS 020	<b>IRRAflow 2.0 Catheter</b>	 Dual-lumen catheter combines active irrigation with CSF drainage, which enhances fluid removal.
<b>IRRAFLOW TUBE SET</b>		
ICDS 020	<b>IRRAflow Tube Set</b>	 Intelligent digital pump enables communication between control unit and catheter to provide automated irrigation, fluid drainage, and ICP monitoring.
<b>IRRAFLOW CONTROL UNIT</b>		
ICCU 020	<b>IRRAflow Control Unit</b>	 Active fluid exchange via an intuitive touchscreen with personalized alarm settings that provide control when managing ICP and CSF.

## CUSTOMER SERVICE

US 1-800-946-0458 | EU +31-20-210-1098

US.customerservice@irras.com

Global.customerservice@irras.com

## IRRAS USA INC.

11975 El Camino Real, Suite 304

San Diego, CA 92130 USA

Tel: (800) 213-4604



# IRRAS



www.irras.com